

# Forente

Your forensic technology partner in solving crime

Forensic Light Sources



Evidence Screening



Fingerprint Evidence



CLIMS



Ballistics



Trace Evidence



## 2019 Product Overview

# Handheld Forensic Light Sources

**LIGHTcube – the modular forensic light.** LIGHTcubes can be scaled, multiple modules of same wavelength for more power or different wavelengths for different tasks. These lights are easy to clean to reduce DNA risks and designed without a cooling fan. Available in a wide range of colours from UV to IR and come complete with wavelength matched filters and goggles.



**Superlite M05** LED forensic lights. The most powerful speciality light source in its class. 11 high power LED wavelengths from UV to IR, uniform lighting, user adjustable spot size, 3 user selectable power levels, incredibly long battery life up to 4 hours. The kit includes long pass filter goggles, ruggedized carry case, car and mains charger and camera filters.

# Shoe Mark and flat surface forensic light source



**OR-GZJ40** A rechargeable battery operated 30W white linear light source with telescopic handle. Ideal for detection of shoe marks on floors or Gel lifts and for detection of fingerprints on windows.

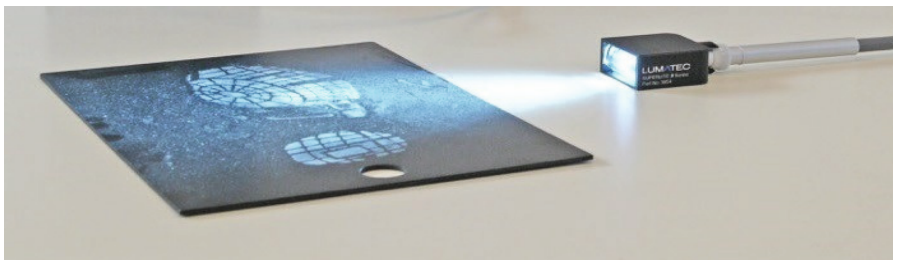
## White lights with contrast filters

**OR-GYG30B** is a powerful 12W white forensic light source with Red, Green and Blue contrast filters. The light produces a circular uniform spot ideal for crime scene investigation with 3 power settings and a blinker mode. With an operating time on a single battery charge of up to 2.5 hours and provided in a ruggedized carry case the OR-GYG30B provides a cost effective forensic tool for general evidence search.



# Tunable forensic Light source

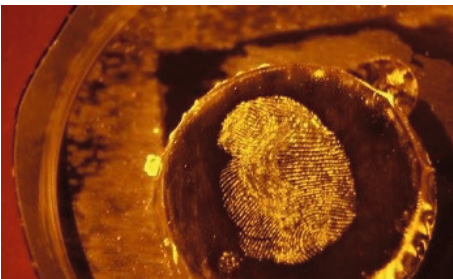
**Superlite S04** A powerful tuneable light source with liquid light guide. It provides 10 discrete wavelength bands from UV to yellow in one compact battery operated or mains powered unit. Ultra high power densities with uniform beam and variable intensity control.



A range of accessories are included including oblique line illuminators for illuminating evidence such as gel lifts, optical evidence magnifier and a transmitted light pad. The evidence magnifier is particularly useful for revealing and photographing chemically treated or powdered fingerprints.

# Crime Scene and Laboratory Forensic Lasers

**Brightbeam Forensic Lasers** High power monochromatic forensic lasers. Single or dual wavelength versions. High power up to 14 Watts in Blue (445nm) and 8 Watts Green (525nm or 532nm). The Ultra laser shown below is a compact and lightweight (from 4.7kg to 7.7Kg) that can be carried on your shoulder or in a backpack. The laser can be powered via mains or battery operation with 150 minutes of operation time – perfect for lab or crime scene use. Free of charge warranties from 2 to 5 years (depending on model).





# Fingerprint Development: Ninhydrin / DFO / Indandione

## NINcha series:-

- ✓ Available in 4 standard sizes
- ✓ Stand alone cabinets. No water plumbing or external extraction required.
- ✓ Touch panel control with data logger for quality control and reporting
- ✓ Precise monitoring of temperature & humidity inside the cabinet
- ✓ Fast recovery times in-line with CAST requirements (S31 model)
- ✓ Pre-programmed treatment cycles
- ✓ Internal air filters and optional external ventilation
- ✓ UV Decontamination unit



NINcha P31



NINcha S31



NINcha S31 with trolley



NINcha M31



NINcha L31

# Fingerprint Development: Superglue cabinets

## MegaFume series:-

High performance fingerprint development on porous and semi porous surfaces with a focus on quality monitoring and ease of cleaning and maintenance.

- ✓ Available in 2 sizes:- desktop and mid-size (large version coming soon)
- ✓ Internal easy clean structure with simple filter change system
- ✓ Touch panel control with data logger for quality control and reporting
- ✓ Automatic or manual control operating cycle
- ✓ Dual temperature operation for liquid superglue or Polycyano
- ✓ UV Decontamination unit



## CyKo30 Portable Superglue Cabinet

The CyKo30 superglue is built within a Peli waterproof transit case with 30 litre capacity. It can operate on mains or a 12Vdc supply.

# Fingerprint Evidence



## Vacuum Metal Deposition (VDM) Coaters

Forensic coaters are the latest development of the Edwards originals which are now built and supported by HHV Ltd. 2 different size models are available providing high throughput and rapid processing of evidence.

## Scene of Crime Superglue development

### MOBifume System:-

For development of fingerprints on vehicles in a garage/ tent, or directly at the crime scene. A portable system with secure radio link remote control of the evaporation / humidity and filter process.



- ✓ Scalable system multiple systems can be grouped together to develop large areas
- ✓ Easy to clean and maintain
- ✓ Touch panel tablet provided to control operation via secure radio link
- ✓ Minimal cables and easy to set to up
- ✓ Dual temperature operation for liquid superglue or Polycyano



# Fingerprint Evidence

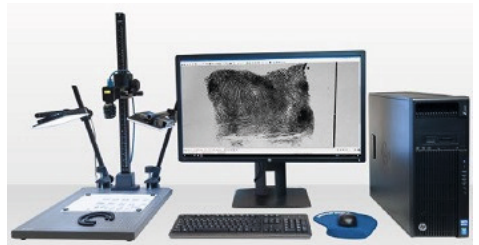
**EVISCAN** 'real time' contactless fingerprint detection that preserves both the DNA and the integrity of the fingerprint. Unique system for automatic detection, scaled imaging and casework management of fingerprints without any contact, powders or chemical treatment. Reveals fingerprints in near real time simply by scanning the evidence in the mid Infra-red.



**POWERado** A downdraft filter workstation for fingerprint powder applications. Stainless steel working surface, pre-filter and particulate filtering, touch panel controls and integrated White/UV lighting.



**Fingerprint Comparison Workstation** A complete workstation for imaging, processing and comparison of fingerprints. Includes camera, lighting, imaging capture and comparison software.



# Vacuum Superglue development



**Voigtlander Vacuum Superglue system** offers a system for developing fingerprints with cyanoacrylate within a vacuum which provides an excellent method of developing prints on partially closed plastic bags, drugs wraps. 2 sizes available.

# Photography & Evidence Imaging

**Agilelite & Forte-Lite** A powerful lighting attachment for your DSLR camera that provides rapid visible, fluorescent and anti-stokes imaging. Compatible for Nikon and Canon DSLR cameras. Pre-scaled 1:1 images in less than 5 seconds of tool marks, fingerprints, body fluids etc..



**PHOTOvert** Motorised filtered photography workstation compatible for the DCS-3/4/5 system from Foster and Freeman. Stainless steel construction, strong downdraft air system (HEPA filtering), motorised camera arm and variable height adjustment.

# Crime Scene Evidence Screening

**SCENEview BV800** Rapid visualisation of untreated or chemically treated blood and screening of GSR on a wide range of surfaces including clothing, carpets and floors.



- ✓ Detects diluted blood up to 50,000 times dilution
- ✓ Infra-Red and colour imaging with 5Mpix camera
- ✓ Integrated IR light source
- ✓ Integrated Red Orientation light
- ✓ New integrated LED lights (Choice of UV, Violet, Blue or Green for detection of body fluids)
- ✓ Residual light amplifier with 70,000x amplification for use with chemical reagents
- ✓ Lightweight 2.1Kg
- ✓ Inbuilt embedded PC
- ✓ Battery or mains operated
- ✓ Easy to clean design for DNA sterilization



**OR-GQP5000** A compact multi-wavelength imaging system combining White, UV, Blue and IR for non destructive a rapid detection of fingerprints / palm prints, body fluids and blood directly from your mobile phone.

# Laboratory Evidence Screening

**LABview BV900** is designed for the laboratory to aid the screening and detection of a wide range of evidential material including biological traces, fibres and hairs. The system is modular allowing additional lighting modules to be added. The touch screen control provides easy control of lighting, filters, image and video capture. The system is either wall mounted or is supplied on a stainless steel pedestal.



**LSV2** A multi wavelength evidence screening system combining 7 LED light sources, a high resolution colour + NIR zoom camera capable of capturing and documenting evidence including blood, GSR, body fluids & explosive residues.

# Ballistics

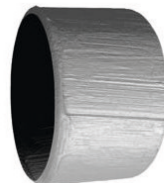
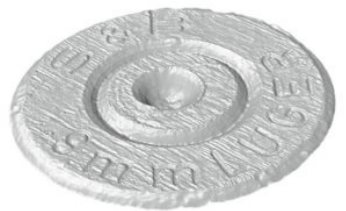
**Phenom-Perception GSR** The world's first automated desktop scanning electron microscope for GSR. Electron optical magnification of x100,000, EDS sensor for elemental detection and ASTM E1588/ENFSI compliant analysis and classification software. Can accommodate up to 30 x GSR stubs at a time. UKAS accredited.



**LCF3 Ballistics and Tool Marks Comparison Microscope** A robust and powerful microscope offering outstanding performance, ergonomic comfort and versatility. 22mm un-reversed field of view, 16:1 zoom ratio with 14 matched magnification positions. x6 to x102 zoom based magnification.



**BALSCAN** Is a dedicated workstation for high resolution 2D and 3D imaging of fired ammunition. Images can be saved to a database or network. Images can be annotated, then compared and matched with sophisticated comparison software.

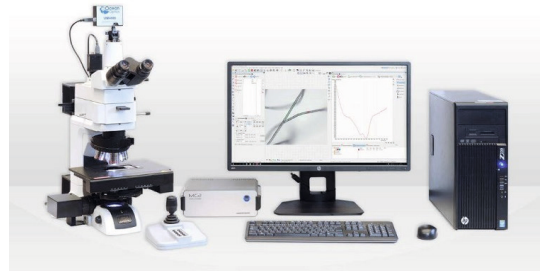




# Trace Evidence, Tool Marks and Shoe Marks

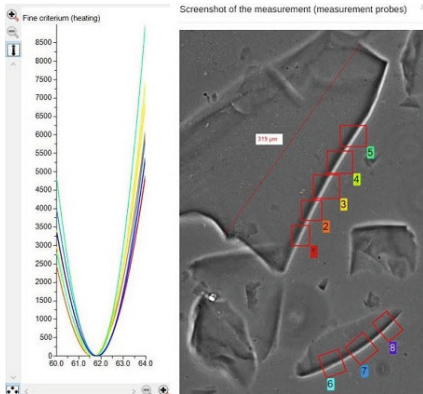
## UV-VIS-NIR Micro Spectrometer

This instrument combines a NIKON microscope with a high precision motorised stage and pin hole UV- visible-NIR micro-spectrometer. High precision colour measurement with 1 micron repeatability XY stage.



## Refractive Index Measurement

Uses the oil immersion method combined with a NIKON microscope and Mettler hot stage. Up to 20 re-sizeable measurement probes and reproducibility of measurements under 0.00002 (standard deviation)



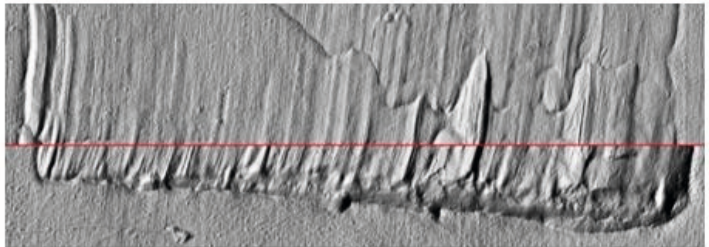
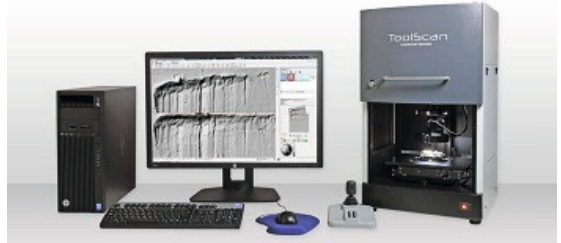
## LCT Trace Evidence Comparison

**Microscope** Designed for forensic comparison of fibres, hairs, paint chips, plant matter etc... The LCT offers an always colour and intensity matched split field, superimposed and individual left/right imaging. Large 22m field of view.

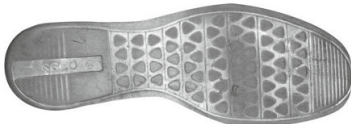


# Trace Evidence, Tool Marks and Shoe Marks

**TOOLSCAN** A complete workstation for imaging tool marks in 2D and 3D. The system provides a full set of comparison functions for precise matching. Suitable for a wide range of objects including cylinder locks, padlocks, cables, tyre pieces, cartridge cases, bones etc..



Directly scanned shoe sole

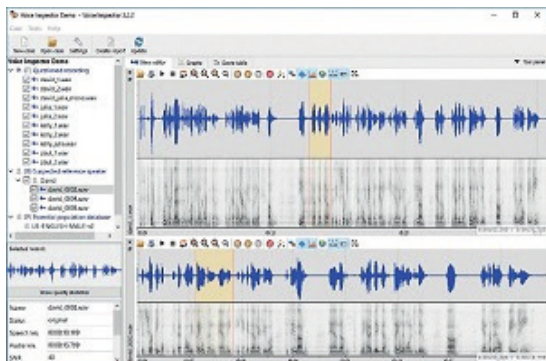


Direct shoeprint



**TRACOSCAN** is a versatile workstation for examination of shoeprints, documents, fingerprints and other flat surfaces. High resolution 1000dpi images can be saved, annotated, measured and compared.

# Forensic Voice Identification



**The Phonexia Voice Inspector** provides police forces and forensic experts with a highly accurate speaker identification tool that supports criminal investigations. It uses the latest voice biometry algorithms to recognise a speaker automatically. It provides scoring to likelihood ratio, detailed reports and graphic presentation.

## Rapid DNA Extraction



**PDQ-EX2400** Automated DNA extraction technology. Robust DNA extraction device that can achieve PCR and human profile ready DNA in under 10 minutes. The compact size means it can easily be placed in a laminar flow hood or on a benchtop. The PDQ-EX2400 is a 24 sample extractor with a small footprint 200 mm x 200mm

# Document Examination

## ESDA Toner and Ozone Reduction

The TORnado SF91 is a system designed for use with the Foster and Freeman ESDA's to reduce toner and ozone exposure produced from the ESDA process. Included HEPA particulate filter, touch panel control and integrated illumination source.



**Forensic Magnifiers** These are provided with or without an integrated camera. They are low cost and simple to use with up to 9 integrated LED light sources for rapid authentication of ID cards, passports, currency and for visualising fingerprints.

The magnifier provides a simple tool for visually verifying:-

- Micro-print
- Alterations to documents
- Intaglio and embossed print
- UV security print in passports, ID cards and currency
- Anti-stokes security features
- Fingerprints



# CLIMS – Forensic and Laboratory Information Management System



**CLIMS** A forensic and Laboratory Information Management System (LIMS) that is a complete case management platform to provide chain of custody together with a powerful modular case and workflow management for all forensic laboratory branches. ISO17025, ENFSI compliant equipped with mailing, calendaring and extensive fast and accurate reporting tools including for staff and equipment.

Modules include:-

- Digital forensic
- Ballistics
- Biology
- Chemistry
- DNA
- Fingerprint
- Questioned document
- Narcotics
- CSI





# About Us

**ForenteQ Limited** is a UK and Ireland distributor of innovative forensic science equipment. We are passionate about helping you solve crime. We are committed to the delivery of high quality, state of the art equipment that provides a novel approach to evidence recovery and imaging that delivers results.



ForenteQ's office in Warwick



Paul Butler, Managing Director

Our services include:-

- ✓ Equipment sales
- ✓ On-site installation
- ✓ Product training
- ✓ Product servicing
- ✓ Calibration
- ✓ Service and support contracts



Your forensic technology  
partner in solving crime

Please contact us to find out more

**E:** paul.butler@forenteq.com

**T:** +44 (0)1926 676402

ForenteQ Ltd, Pure Offices, Lake View House, Wilton Drive,  
Tournament Fields, Warwick, CV34 6RG United Kingdom

[www.forenteq.com](http://www.forenteq.com)